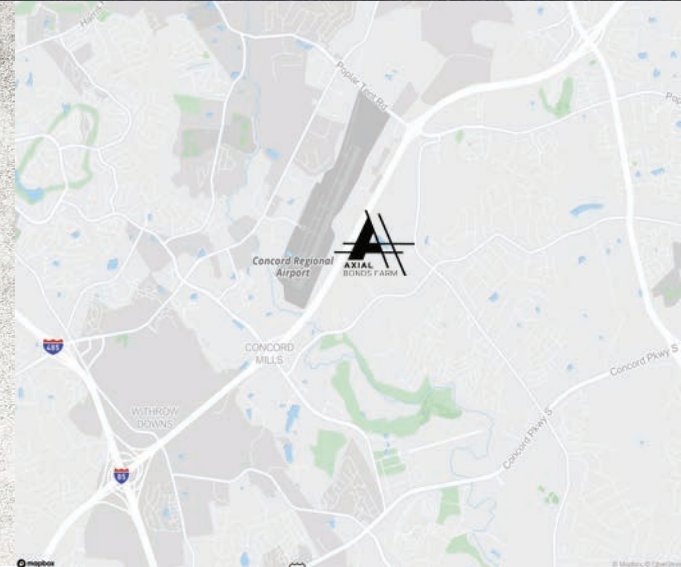


AXIAL BONDS FARM

BY CRESCENT
COMMUNITIES



Axial Bond Farms will consist of three rear-loading industrial buildings totaling 809,720 square feet with ample employee and trailer parking. The three buildings will measure 414,000, 247,000, and 148,720 square feet and provide the flexibility to be demised and to accommodate multiple tenants. These features, along with modern clear heights and deep truck courts, will satisfy both local and regional manufacturing and assembly users with a distribution component.



AXIAL

Bonds Farm

Pitts School Road
Concord, NC 28027

Contact

Bryan Crutcher
704 331 1215
bryan.crutcher@cbre.com

Anne Johnson
704 331 1225
anne.johnson@cbre.com

CBRE

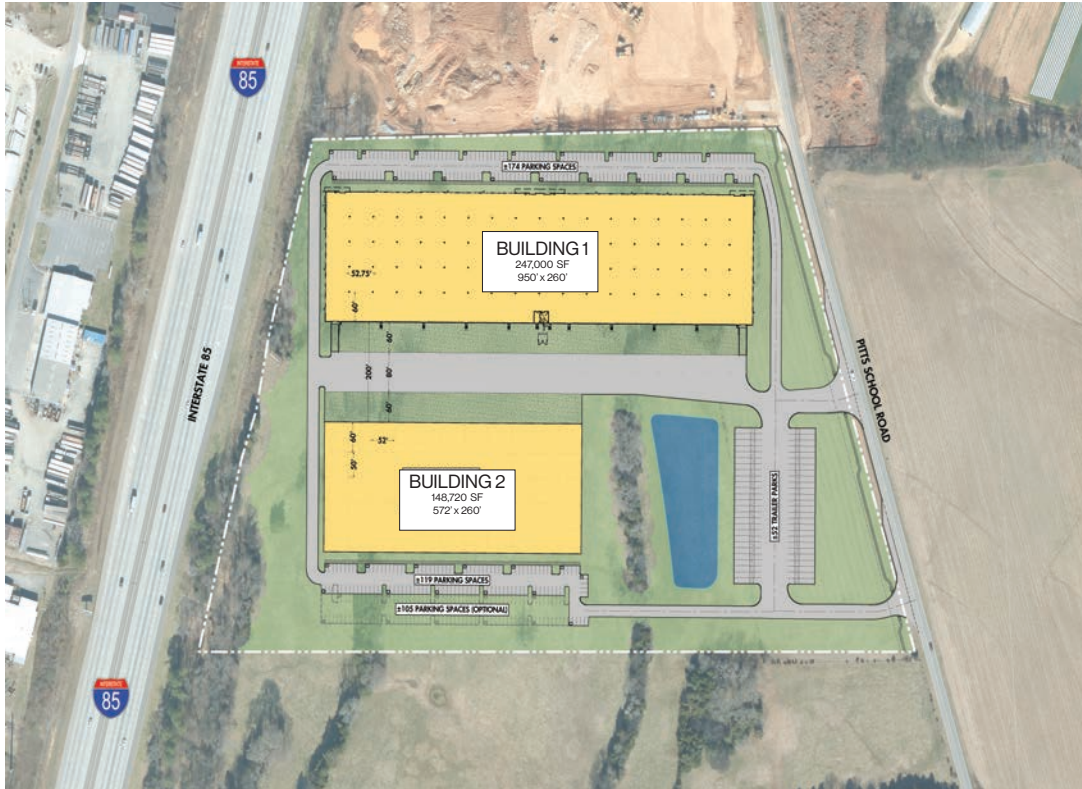


AXIALINDUSTRIAL.COM/BONDSFARM

AXIAL BONDS FARM

BY CRESCENT
COMMUNITIES

SITE PLAN



AXIAL BONDS FARM

BY CRESCENT
COMMUNITIES



The Charlotte Industrial Market experienced almost 7.9M SF of absorption in 2021

Direct access from I-85

Serves the entire region via I-85

Vacancy ratio for our Industrial Market is 2.97% at the end of 2021

AXIAL BONDS FARM

BY CRESCENT
COMMUNITIES

● SITE PLAN

Space to move

Totaling 809,720 square feet, Axial Bonds Farm offers convenient, immediate access to I-85. Also, located just a few miles from I-485, the location offers connectivity to the region's vast interstate system.

Contact

Bryan Crutcher
704 331 1215
bryan.crutcher@cbre.com

Anne Johnson
704 331 1225
anne.johnson@cbre.com

CBRE



AXIALINDUSTRIAL.COM/BONDSFARM